

guía fotográfica de ensamble de la fuente regulada de 5V

Esta es una presentación fotográfica de los pasos a seguir para ensamblar tu kit de fuente regulada.

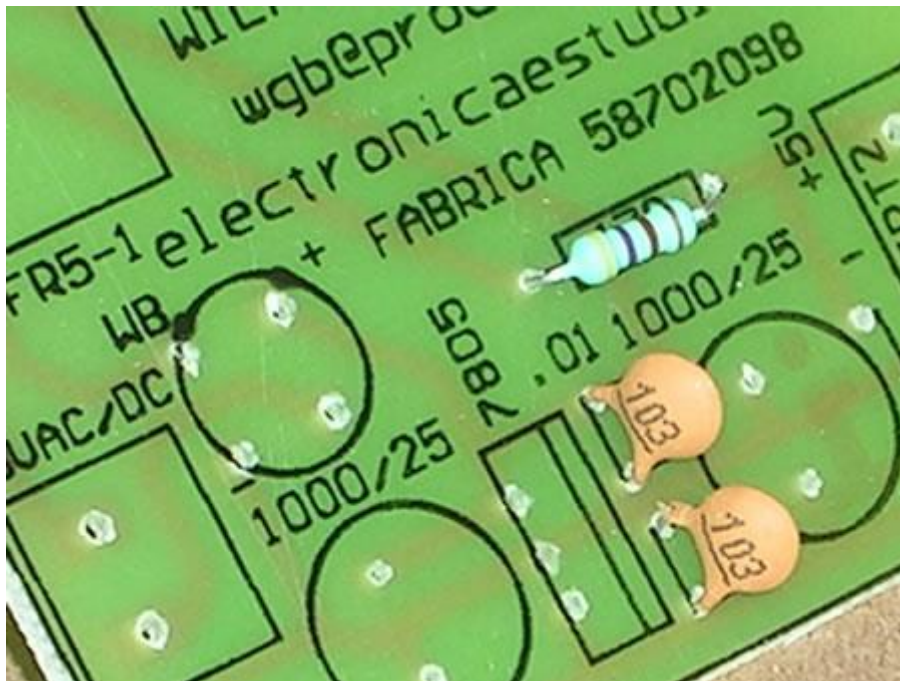
1 fuente de 5V CD



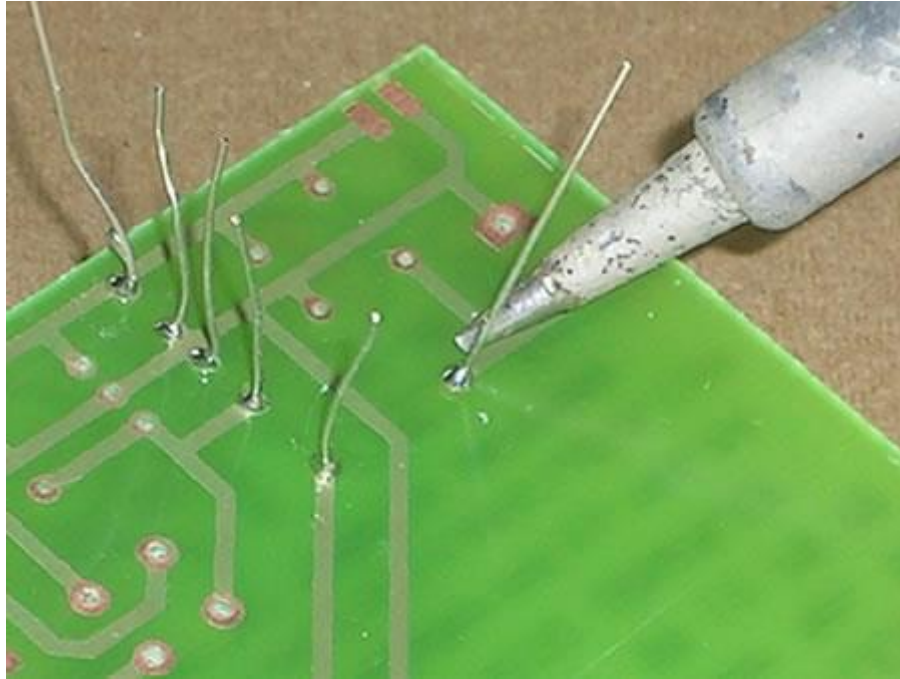
2 las partes



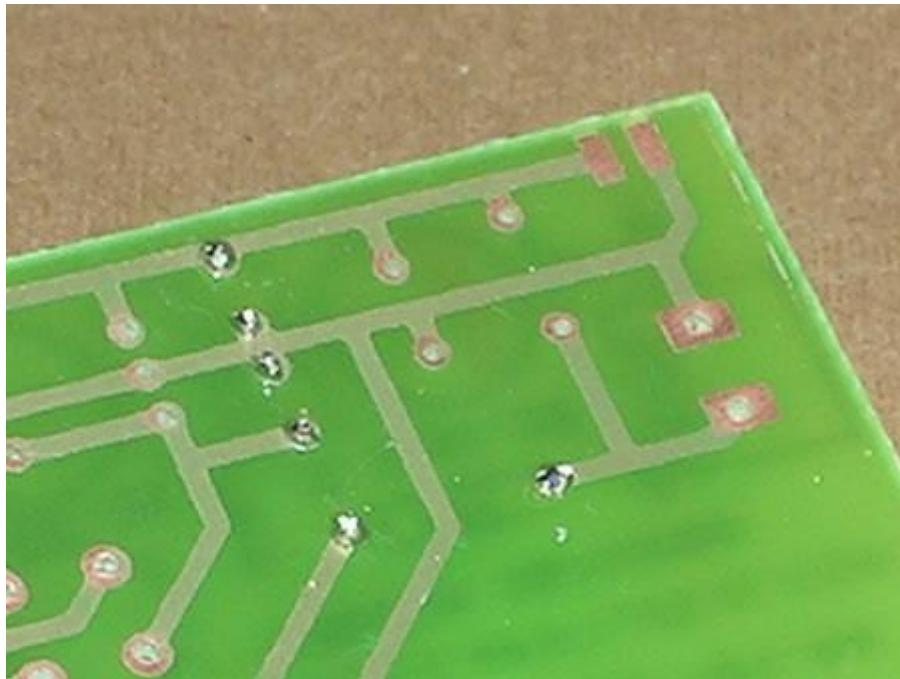
3 resistencia y capacitor de cerámica



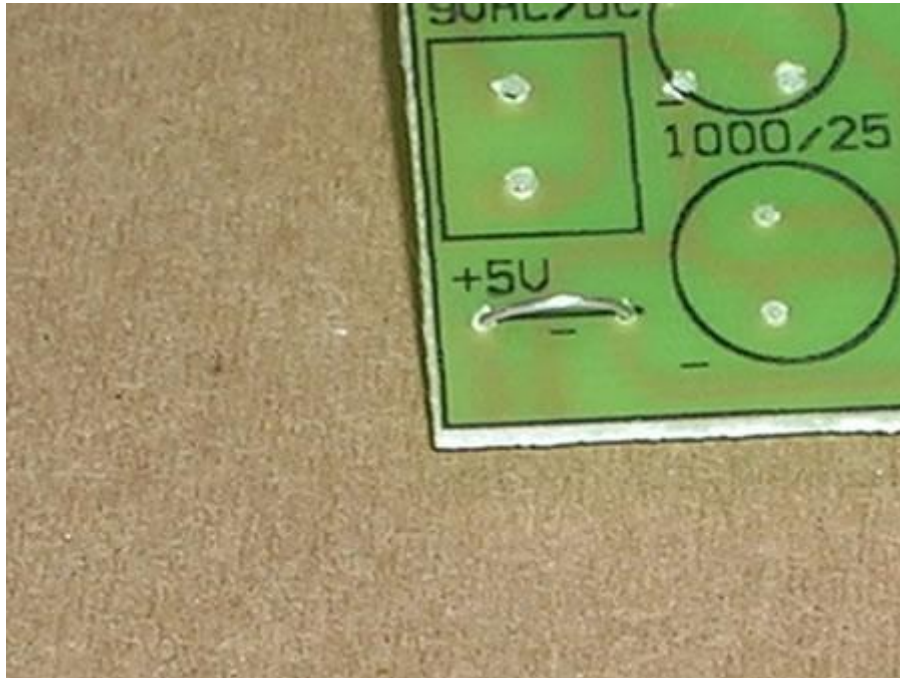
4 soldando



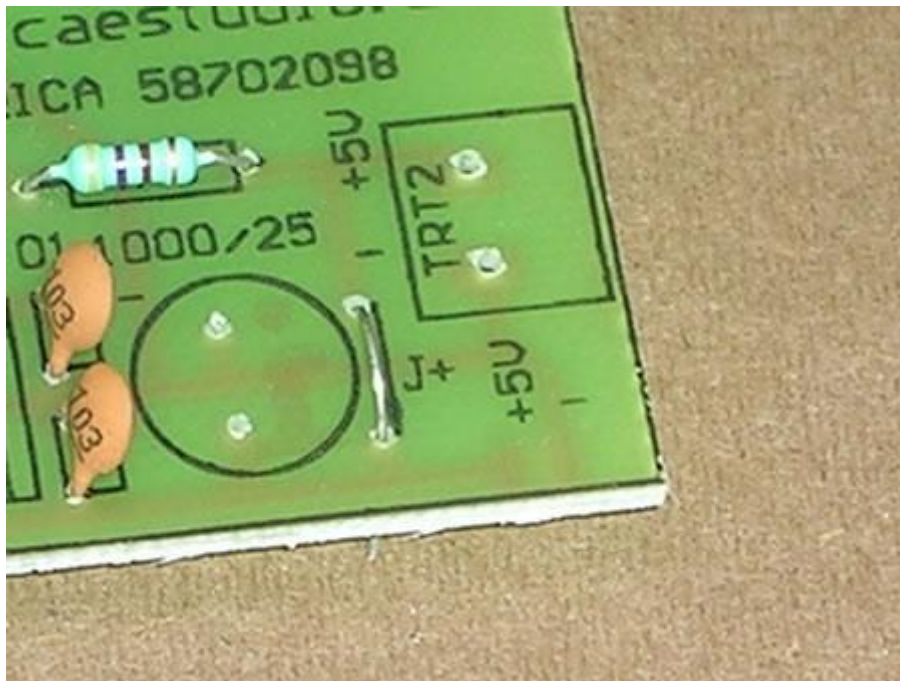
5 cortando las patas



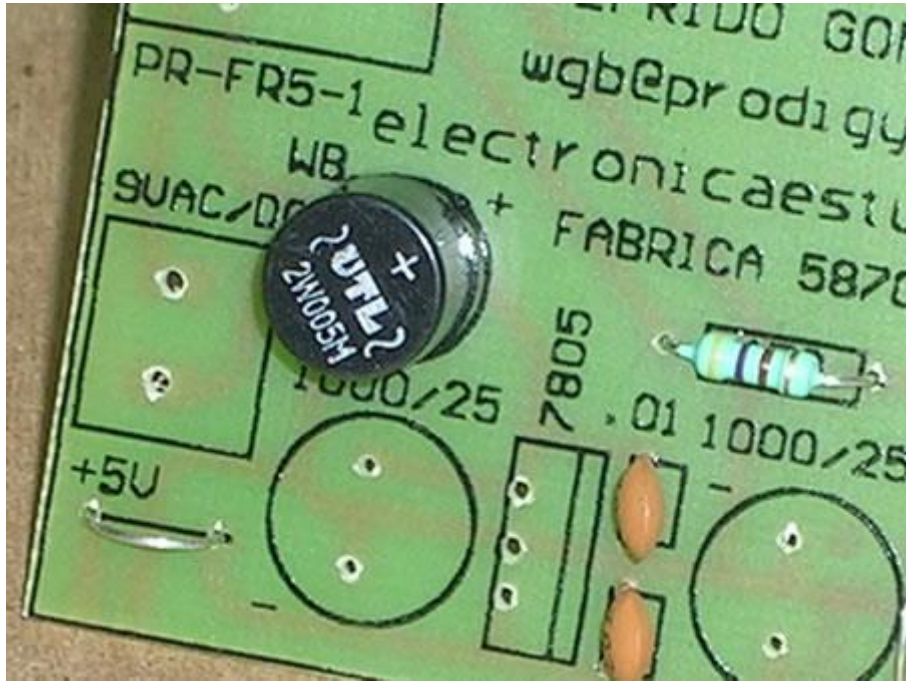
6 puente izquierdo



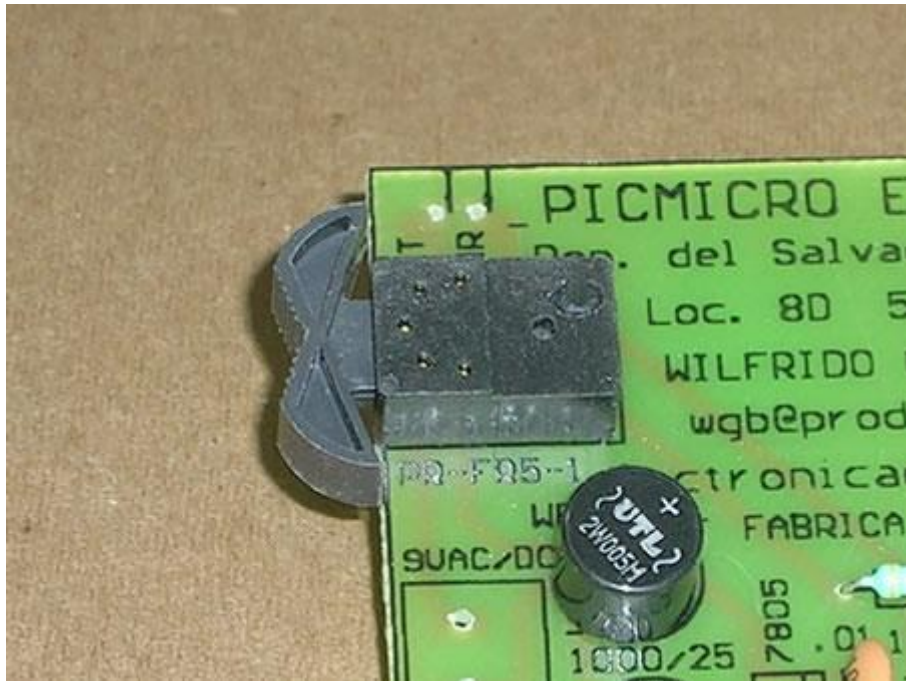
7 puente derecho



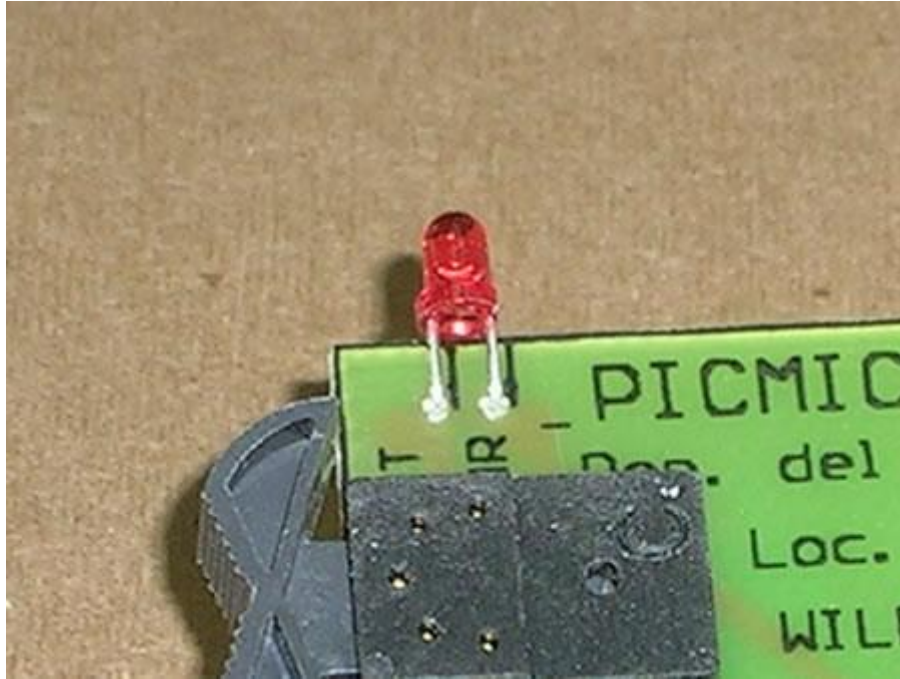
8 puente rectificador



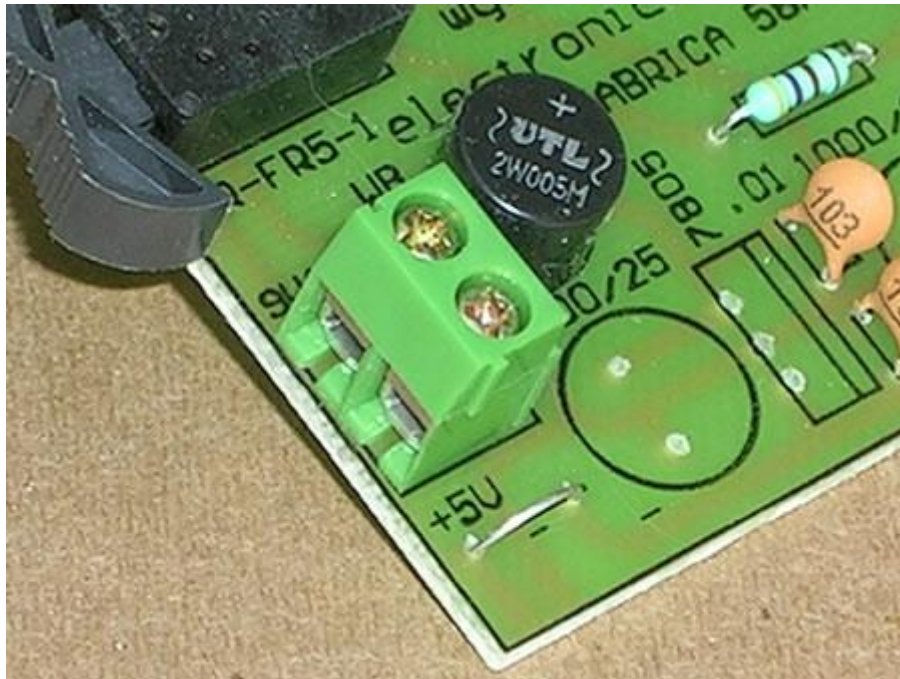
9 interruptor



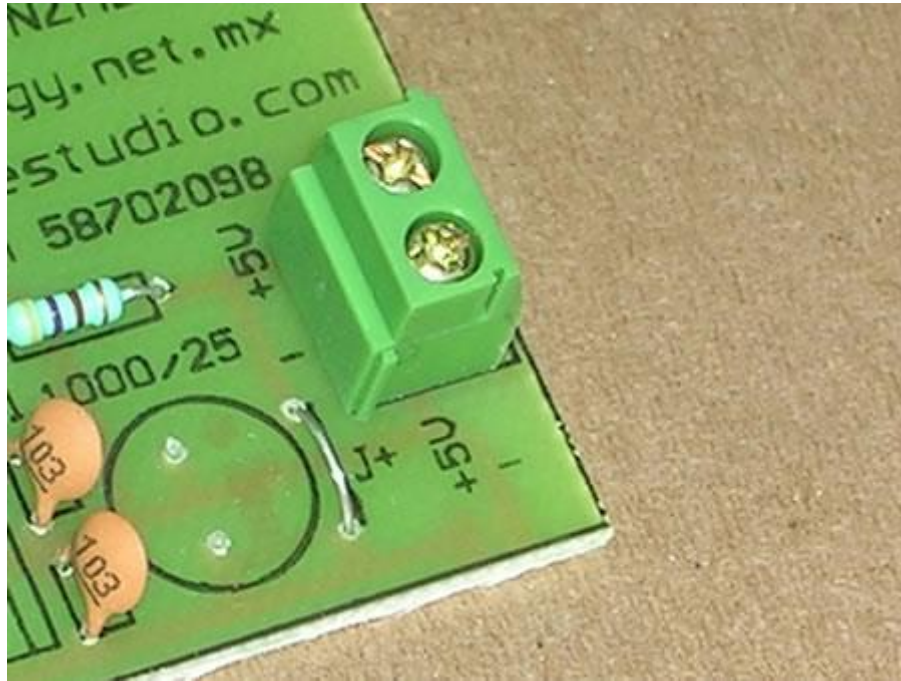
10 led



11 borne izquierdo



12 borne derecho



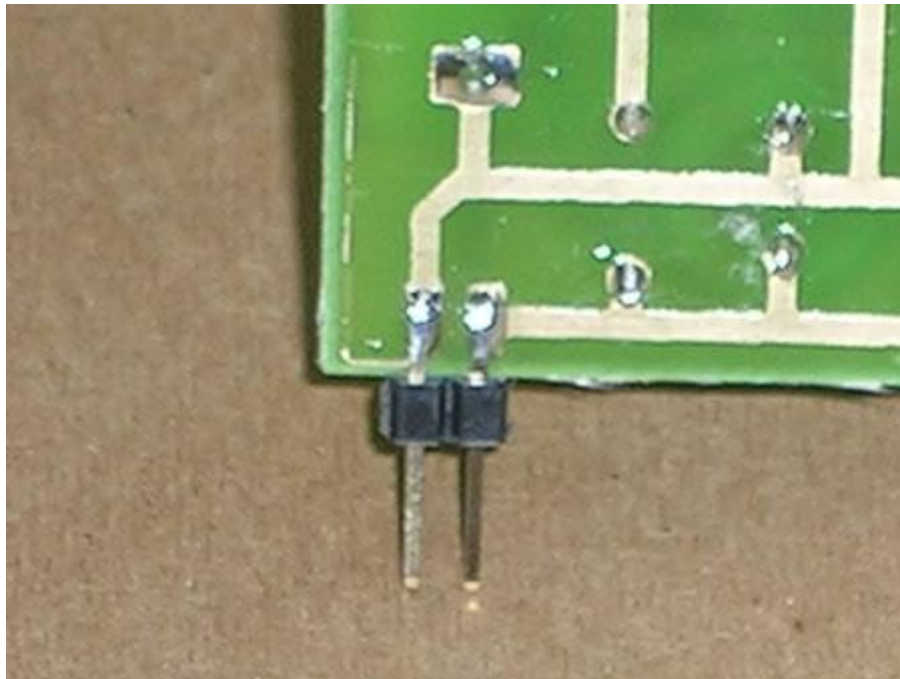
13 capacitores electrolíticos



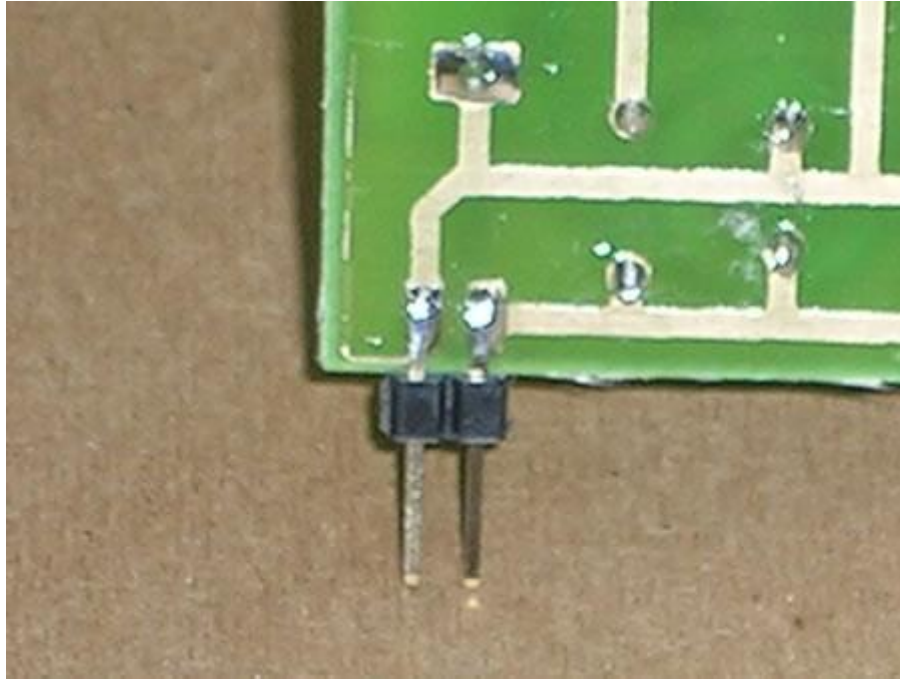
14 regulador 7805



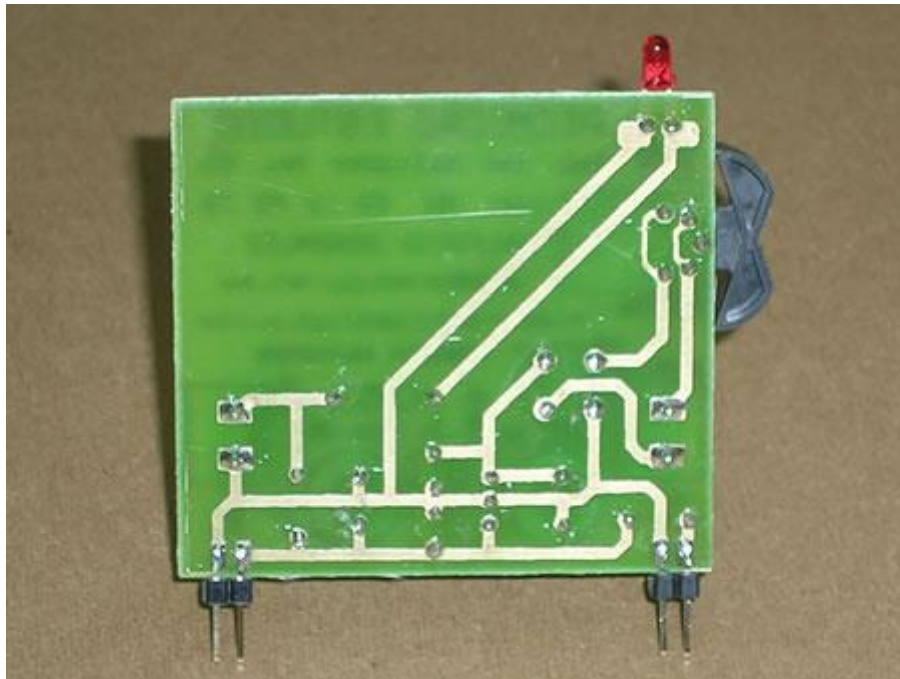
15 pin izquierdo



16 pin derecho



17 lado componentes



18 conectando



19 prueba borne de salida



20 prueba pin derecho



21 prueba pin izquierdo



22 vista final

